

Childcare Enhancement With A Purpose

VOLUME 7, ISSUE 3

SPRING, FY 2017



Our Mission

CCEP (Childcare Enhancement with a Purpose), funded by Alabama DHR, offers free inclusion training to childcare providers statewide. CCEP utilizes experienced teachers and therapists to share simple, practical ways to work with and include children with special needs in childcare centers and family/group childcare homes.

This program offers:

- ◆ A curriculum with a multidisciplinary approach which utilizes developmentally appropriate practices.
- ◆ Stipend available to offset expense for substitute teachers during training.
- ◆ Educational kits.
- ◆ Clock-hour credit approved by the Department of Human Resources.
- ◆ Onsite consultation and technical assistance.
- ◆ Workshops.
- ◆ Other resources for assistance.

Check out our website at www.ucphuntsville.org for a list of all available statewide trainings.

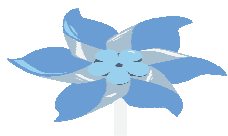
Visit our Pinterest page! Search for **Childcare Enhancement With A Purpose** for tons of ideas and activities to help you in the classroom.



To register for classes contact Stephanie Eger at 256.859.4900 or email seger@ucphuntsville.org

Early Childhood Inclusion

The term *inclusion* refers to the practice of bringing children with disabilities together with typically developing children. In the past, children with a disability would perhaps receive special services alone with a therapist, or maybe in a class with other children with various disabilities. But the segregation of children with disability often slowed their development. Now, the law (IDEA) requires that children of *all* abilities learn together in the “least restrictive environment,” which usually means in an early childhood program or other setting in which typically developing children participate. CCEP can provide you (at no cost to you) classroom technical assistance by providing strategies to help your classroom environment be more successful for all, including those with special needs.



Make your own Pinwheel

Materials:
Square piece of paper, pencil, scissors, push-pin

Directions:

- Take a square piece of paper and fold it hot-dog style
- Fold the paper again, but this time hamburger style
- On the corner that has no folds, cut diagonally across almost all the way to the center
- Open up the square
- Fold the right corner of each triangle to the middle
- Secure with pin into pencil eraser

April is Child Abuse & Neglect Prevention Month!

Throughout April, celebrate the lives you touch and those who have touched yours by honoring them with a pinwheel – the national symbol for the great childhoods all children deserve because our children are our future.

When we invest in healthy child development, we are investing in community and economic development. Children who are raised in supportive and stable environments are more academically and financially successful, and great childhoods help children grow into productive, contributing adults who help their community, and our country, be prosperous and competitive in the global economy. Unfortunately, children are sometimes exposed to extreme and sustained stress like child abuse and neglect, which can undermine a child’s development. Research conducted by Prevent Child Abuse America estimates that implementing effective policies and strategies to prevent child abuse and neglect can save taxpayers \$80 billion per year.

To register, call Stephanie Eger at 256.859.4900 ext.106 or e-mail at seger@ucphuntsville.org

Because children with special needs are at high risk for child abuse and neglect, CCEP is offering training on this topic, along with Shaken Baby Syndrome (Abusive Head Trauma) and Sudden Infant Death Syndrome (SIDS) this quarter. If session dates/locations are not convenient for you, please call to schedule a training session at your center.

**Child Abuse and Neglect & Reporting (1 hr)
Abusive Head Trauma/Shaken Baby Syndrome (.5 hr)
Sudden Infant Death Syndrome (.5 hr)**

Training Opportunities

Date	Title	Time	Location	Level	DHR	CCDF	CKA	CDA	Target Age Group
Cullman County									
Monday 5/8/17	Child Abuse & Neglect Abusive Head Trauma SIDS	6-8 p.m.	Temple Baptist CDC 30 County Rd. 1184 Cullman	I, B	HSUP	2, 6, 11	HSN	1	ALL
DeKalb County									
Thursday 4/20/17	Child Abuse & Neglect Abusive Head Trauma SIDS	6:30-8:30 p.m.	Fort Payne CDC 651 Wallace Ave. NE Fort Payne	I, B	HSUP	2, 6, 11	HSN	1	ALL
Jackson County									
Tuesday 5/9/17	Child Abuse & Neglect Abusive Head Trauma SIDS	6-8 p.m.	Impact Learning Center 23123 John T. Reid Pkwy. Scottsboro	I, B	HSUP	2, 6, 11	HSN	1	ALL
Limestone County									
Thursday 5/25/17	Child Abuse & Neglect Abusive Head Trauma SIDS	6-8 p.m.	Friendship Learning Center 16479 Lucas Ferry Rd. Athens	I, B	HSUP	2, 6, 11	HSN	1	ALL
Madison County									
Tuesday 6/13/17	Child Abuse & Neglect Abusive Head Trauma SIDS	6:30-8:30 p.m.	UCP Technology & Training Center 1856 Keats Drive NE Huntsville	I, B	HSUP	2, 6, 11	HSN	1	ALL
Wednesday 6/21/17	Child Abuse & Neglect Abusive Head Trauma SIDS	1-3 p.m. Call CCC at 256.551.7016 to register for this class	Child Care Central 2006 Franklin St. Huntsville	I, B	HSUP	2, 6, 11	HSN	1	ALL
Marshall County									
Thursday 4/13/17	Child Abuse & Neglect Abusive Head Trauma SIDS	6-8 p.m.	Guntersville Public Library 1240 O'Brig Ave. Guntersville	I, B	HSUP	2, 6, 11	HSN	1	ALL
Morgan County									
Wednesday 5/24/17	Child Abuse & Neglect Abusive Head Trauma SIDS	6-8 p.m.	Decatur Public Library 504 Cherry St. NE Decatur	I, B	HSUP	2, 6, 11	HSN	1	ALL

TRAINING LEGEND DHR2016

Training Levels

Basic = Most appropriate for entry-level professionals who are new to early childhood and/or school-age care.

Basic Level Training covers a foundational understanding and demonstration of developing skills.

Intermediate = Most appropriate for professional who have at least two (2) years of experience and 120 hours of training in child development, and are moving toward more formal education. **Intermediate Level Training** includes expanding knowledge and application and refining skills.

Advanced = Most appropriate for professionals who have at least three (3) years of experience and 30 credit hours in child development. **Advanced Level Training** focuses on a more thorough knowledge and understanding of developmentally appropriate practice and highly effective application and demonstration of skills.

DHR Minimum Standards Training Areas

CD=Child Development

HSUP=Health, Safety, and Universal Precautions

QCCL=Quality Child Care and Licensing

CCPF=Child Care Professional and the Family

LD=Language Development

PDG=Positive Discipline and Guidance

AM=Administration and Management

CDA (Child Development Associate) Content Areas

1. Planning a safe, healthy environment to invite learning
2. Steps to advance children's physical and intellectual development
3. Positive ways to support children's social and emotional development
4. Strategies to establish productive relationships with families.
5. Strategies to manage an effective program operation.
6. Maintaining a commitment to professionalism
7. Observing and recording children's behavior.
8. Principles of growth and development.

Alabama Pathways Core Knowledge Areas (CKA)

CGD=Child Growth and Development

HSN= Health, Safety and Nutrition

LEE= Learning Experiences and Enrichment

DIV=Diversity

COA=Child Observation and Assessment (Planning for Individual Needs)

ICFC=Interaction with Children, Families, and Communities

PPD=Personal and Professional Development

MA=Management and Administration

CCDF Training Areas

1. *Prevention and control of infectious diseases (including immunizations)*
2. *Sudden Infant Death Syndrome (SIDS) prevention and safe sleep practices*
3. *Administration of medications*
4. *Prevention/response to food allergies*
5. *Building and physical premises safety, including identifying electrical hazards, bodies of water, and vehicular traffic*
6. *Shaken Baby Syndrome and head trauma*
7. *Emergency preparedness and response planning for natural or man-caused events*
8. *Storage of hazardous materials and bio-contaminants*
9. *Pre-caution in transporting children*
10. *First-aid and CPR*
11. *Recognizing and reporting child abuse and neglect*
12. *Identifying and serving homeless children and their families*
13. *Promoting the social, emotional, physical, and cognitive development of children, **including those related to nutrition and physical activity, using scientifically-based, developmentally appropriate and age appropriate strategies***
14. *Caring for children in geographic areas with significant concentrations of poverty and unemployment*
15. *Implementing behavior strategies, including positive behavior interventions and support models that promote positive social and emotional development and reduce challenging behaviors, **including reducing expulsions of preschool-aged children for such behaviors***
16. *Engaging parents and families in culturally and linguistically appropriate ways to expand their knowledge, skills and capacity to be meaningful partners in supporting their children's positive development*
17. *Understanding early neurological development*
18. *Using data to guide program improvement*
19. *Supporting positive development of **school-age children***
20. *Improving the quality of programs and services for **infants and toddlers***

Target Age Groups

Infants = Birth to 12 months

Toddlers = 1 and 2 year olds (13 to 36 months)

Preschoolers = 3 and 4 year olds

School-agers = 5 to 12 year olds

ALL = Infants, Toddlers, Preschoolers, and School-agers

Childcare Enhancement With A Purpose

A program of
UCP of Huntsville and Tennessee Valley, Inc.
CCEP Office
1856 Keats Drive
Huntsville, AL 35810

Phone: 256.859.4900 ext. 106
Fax: 256.859.4332
seger@ucphuntsville.org



Visit our website at
www.ucphuntsville.org

Only with the heart can one see rightly.
What is essential is invisible to the eye.

— Antoine de Saint Exupéry,
"The Little Prince"
